

CANDLETREE CONDOMINIUMS

I HEREBY CERTIFY THAT THIS DRAWING REPRESENT AN ACCURATE COPY OF PORTIONS OF THE PLANS OF THE BUILDING AS FILED WITH AND APPROVED BY THE CITY OF DODGE CITY.

Duncan W. Durr
 DUNCAN W. DURR
 DATE 3-18-1981

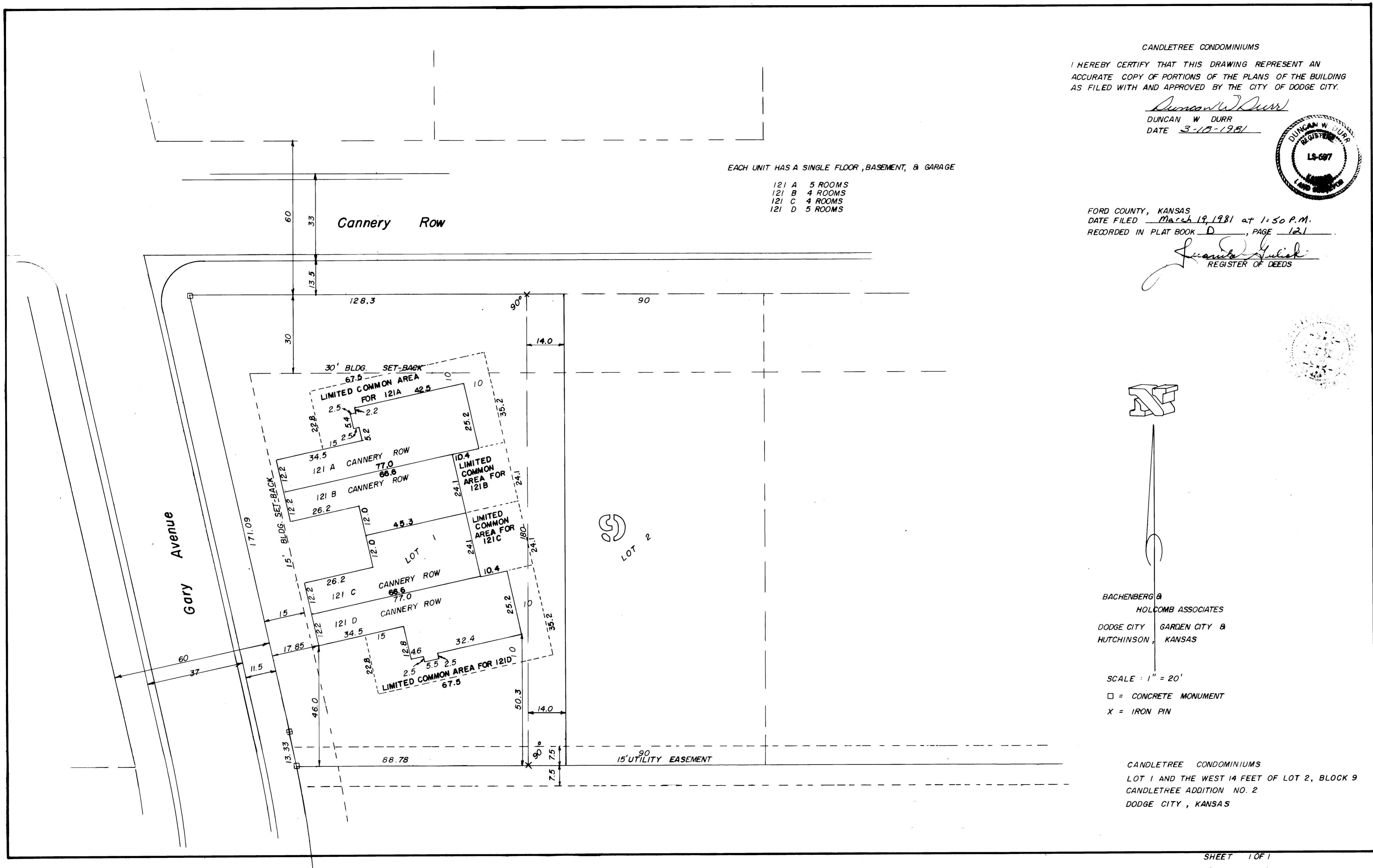


FORD COUNTY, KANSAS
 DATE FILED March 19, 1981 at 1:50 P.M.
 RECORDED IN PLAT BOOK D, PAGE 121

Janice Gulick
 REGISTER OF DEEDS

EACH UNIT HAS A SINGLE FLOOR, BASEMENT, & GARAGE

- 121 A 5 ROOMS
- 121 B 4 ROOMS
- 121 C 4 ROOMS
- 121 D 5 ROOMS



BACHENBERG &
 HOLCOMB ASSOCIATES
 DODGE CITY GARDEN CITY &
 HUTCHINSON, KANSAS

SCALE: 1" = 20'

□ = CONCRETE MONUMENT
 X = IRON PIN

CANDLETREE CONDOMINIUMS
 LOT 1 AND THE WEST 14 FEET OF LOT 2, BLOCK 9
 CANDLETREE ADDITION NO. 2
 DODGE CITY, KANSAS