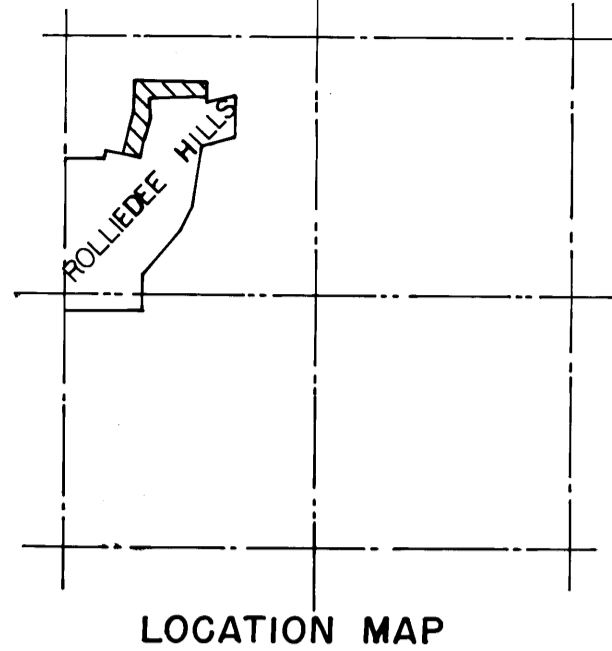


# BLOCKS 8A & 11A ROLLIEDEE HILLS

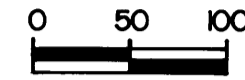
## DODGE CITY, KANSAS

A SUBDIVISION OF PART OF THE NE 1/4 SECTION 24, T26S R25W  
FORD COUNTY, KANSAS

NW COR. OF NE 1/4  
SECTION 24, T26S, R25W

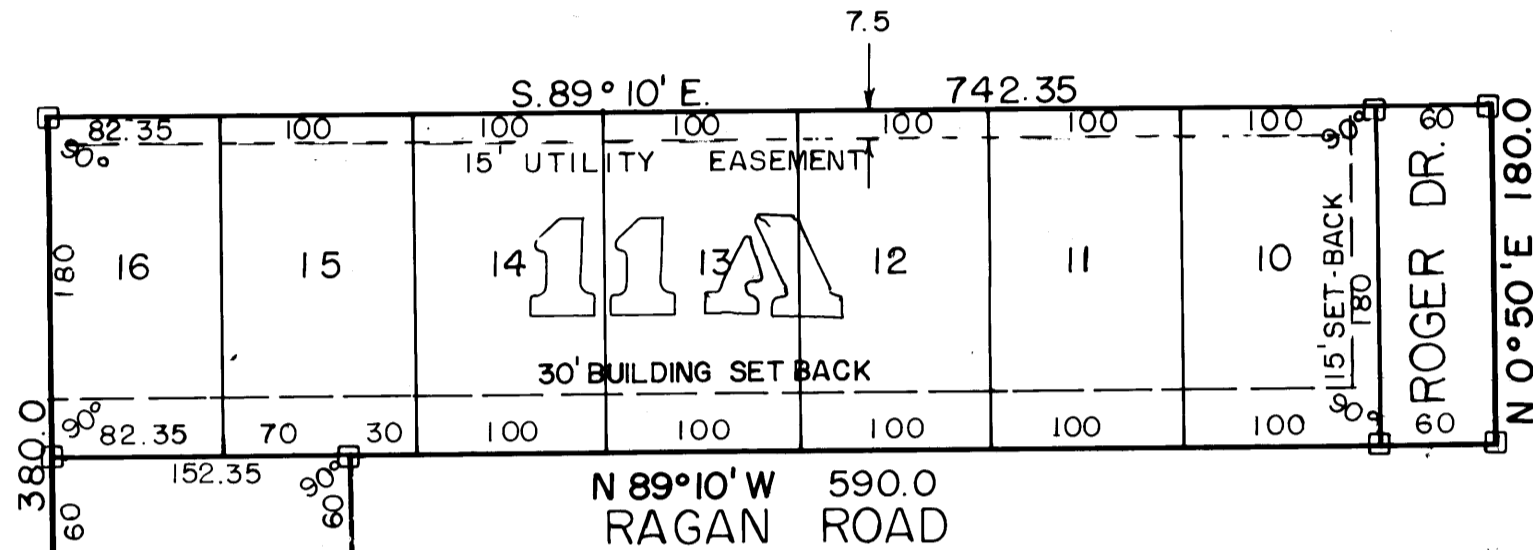


SCALE: 1 INCH = 100 FEET



□ = 4" X 4" CONC. MONUMENT  
○ = IRON PIN

LOCATION MAP



ENTERED ON TRANSFER RECORD THIS 31 DAY  
OF October, 1979.

Lucille Keck  
COUNTY CLERK LUCILLE KECK

REVIEWED AND APPROVED BY COUNTY ENGINEER  
FORD COUNTY, KANSAS.

F. Dale Smith  
F. DALE SMITH  
COUNTY ENGINEER

STATE OF KANSAS  
COUNTY OF FORD SS

THIS IS TO CERTIFY THAT THIS INSTRUMENT WAS FILLED FOR  
RECORD IN THE REGISTER OF DEEDS OFFICE ON THE  
DAY OF October, 1979 IN BOOK 109

Juanita Gulick  
REGISTER OF DEEDS JUANITA GULICK

CURVE "B"  
RADIUS 400'  
DELTA 11° 37' 50"  
TANGENT 46.84  
LENGTH 81.20

SECTION LINE

1393.04 N. 0° 00'

SW COR. OF NE 1/4  
SECTION 24, T26S, R25W

DEDICATION:

WE THE UNDERSIGNED DO HEREBY CERTIFY THAT WE ARE THE OWNERS AND PROPRIETORS OF THE FOLLOWING DESCRIBED TRACT OF LAND UPON WHICH ROLLIEDEE HILLS, A SUBDIVISION THEREOF, IS LOCATED TO WITT:

COMMENCING AT THE SOUTHWEST CORNER OF THE NORTHEAST QUARTER OF SECTION 24, TOWNSHIP 26 SOUTH, RANGE 25 WEST, FORD COUNTY, KANSAS; THENCE NORTH 0° 00' ALONG THE WEST BOUNDARY LINE OF THE NORTHEAST QUARTER OF SECTION 24 FOR 1386.6 FEET; THENCE EAST 90° FOR 604.4 FEET TO A POINT OF BEGINNING, SAID POINT BEING THE NORTHWEST CORNER OF LOT 18, BLOCK 8, ROLLIEDEE HILLS, A PLATTED SUBDIVISION IN DODGE CITY, KANSAS; THENCE NORTH 9° 16' 10" EAST FOR 447.6 FEET; THENCE NORTH 0° 50' EAST FOR 380 FEET; THENCE SOUTH 89° 10' EAST FOR 742.35 FEET; THENCE SOUTH 0° 50' WEST FOR 180 FEET; THENCE NORTH 89° 10' WEST ALONG THE NORTH LINE OF RAGAN ROAD, A PLATTED STREET IN SAID ROLLIEDEE HILLS FOR 590 FEET TO A POINT ON THE WEST LINE OF KERRI DRIVE, A PLATTED STREET IN SAID ROLLIEDEE HILLS; THENCE SOUTH 0° 50' WEST ALONG THE WEST LINE OF SAID KERRI DRIVE FOR 162.85 FEET; THENCE CONTINUING SOUTHERLY ALONG THE WEST LINE OF SAID KERRI DRIVE ALONG A CURVE TO THE RIGHT HAVING A RADIUS OF 400 FEET FOR 81.20 FEET; THENCE SOUTH 12° 27' 50" WEST ALONG THE WEST LINE OF SAID KERRI DRIVE FOR 433.38 FEET TO THE NORTHEAST CORNER OF SAID LOT 18, BLOCK 8, ROLLIEDEE HILLS; THENCE NORTH 77° 32' 10" WEST ALONG THE NORTH LINE OF SAID LOT 18 FOR 125 FEET TO THE POINT OF BEGINNING.

WE FURTHER CERTIFY THAT ALL STREETS, AVENUES, ALLEYS, AND EASEMENTS INCLUDED IN THIS SUBDIVISION ARE FULLY SET FORTH AND DEFINED IN THE ACCOMPANYING PLAT AND ARE INTENDED TO BE AND ARE HEREBY DEDICATED AND OR REDEDICATED TO THE PUBLIC FOR PUBLIC USE AND PURPOSE.

THIS PLAT IS SUBJECT TO CERTAIN RESTRICTIONS AND RESERVATION AS SET FORTH IN A SEPARATE INSTRUMENT OF WRITING, FILED HERewith, AND RECORDED IN BOOK Misc. 33 PAGE 560-562 OF THE OFFICE OF THE REGISTER OF DEEDS, FORD COUNTY, KANSAS.

FIRST NATIONAL BANK AND TRUST COMPANY  
DODGE CITY, KANSAS

BY: D.C. Fitch  
D.C. FITCH - SR. VICE-PRESIDENT AND TRUST OFFICER

STATE OF KANSAS  
COUNTY OF FORD SS

BE IT REMEMBERED THAT ON THIS 7th DAY OF SEPTEMBER, 1979, BEFORE ME, A NOTARY PUBLIC IN AND FOR SAID COUNTY AND STATE CAME D.C. FITCH TO ME PERSONALLY KNOWN TO BE THE SAME PERSONS WHO EXECUTED THE FORGOING INSTRUMENT OF WRITING AND DULY ACKNOWLEDGED THE EXECUTION OF SAME.

IN TESTIMONY WHEREOF, I HAVE HEREUNTO SET MY HAND AND AFFIXED MY NOTARIAL SEAL THE DAY AND YEAR ABOVE WRITTEN.

MY COMMISSION EXPIRES: JUNE 24, 1983  
CORPORATION OF THE PRESIDING BISHOP OF THE  
CHURCH OF JESUS CHRIST OF LATTER-DAY SAINTS,  
A UTAH CORPORATION SOLE  
STATE OF KANSAS SS  
COUNTY OF FORD

NOTARY PUBLIC Fred A. Baker  
BY: Fred A. Baker  
AUTHORIZED AGENT - FRED A. BAKER

BE IT REMEMBERED THAT ON THIS 4 DAY OF Oct, 1979, BEFORE ME, A NOTARY PUBLIC IN AND FOR SAID COUNTY AND STATE CAME FRED A. BAKER, TO ME PERSONALLY KNOWN TO BE THE SAME PERSON WHO EXECUTED THE FORGOING INSTRUMENT OF WRITING AND DULY ACKNOWLEDGED THE EXECUTION OF SAME.

IN TESTIMONY WHEREOF, I HAVE HEREUNTO SET MY HAND AND AFFIXED MY NOTARIAL SEAL THE DAY AND YEAR ABOVE WRITTEN.

MY COMMISSION EXPIRES: May 27, 1981  
BREZINA ENGINEERING  
DODGE CITY, KANSAS

NOTARY PUBLIC Grant A. Brezina  
BY: Grant A. Brezina  
GRANT A. BREZINA P.E. & L.S.

THIS PLAT OF ROLLIEDEE HILLS HAS BEEN SUBMITTED TO AND APPROVED BY THE FORD COUNTY REGIONAL PLANNING COMMISSION THIS 8th DAY OF October, 1979.

THE DEDICATIONS SHOWN ON THIS PLAT ACCEPTED BY THE BOARD OF CITY COMMISSIONERS OF THE CITY OF DODGE CITY, KANSAS THIS 15th DAY OF October, 1979.

THE DEDICATIONS SHOWN ON THIS PLAT ACCEPTED BY THE BOARD OF COUNTY COMMISSIONERS OF FORD COUNTY, KANSAS THIS 22nd DAY OF October, 1979.

ATTEST: Lucille Keck  
COUNTY CLERK LUCILLE KECK

ATTEST: Edward O. Gibb  
CHAIRMAN EDWARD O. GIBB

COMMISSIONER Verne Binkley  
COMMISSIONER Wilbur Underwood

SECRETARY - PAUL CHAFFEE  
CHAIRMAN - JOHN COLLATIE  
CITY CLERK - RON THORNBERG  
MAYOR - RICHARD L. BROWNING

CLOSURE COMPUTATION

BEARING	DIST.	SIN.	COS.	NORTH	SOUTH	EAST	WEST
N. 9° 16' 10" E.	447.6	.16108	.98694	441.75		72.09	
N. 0° 50' E.	380.0	.01454	.99989	379.96		5.53	
S. 89° 10' E.	742.35	.99989	.01454		10.79	742.27	
S. 0° 50' W.	180.0	.01454	.99989		179.98		2.62
N. 89° 10' W.	590.0	.99989	.01454	8.58			589.94
S. 0° 50' W.	203.55	.01454	.99989		203.53		2.96
S. 12° 27' 50" W.	474.12	.21583	.97643		462.94		102.33
N. 77° 32' 10" W.	125.0	.97643	.21583	26.98			122.05
				857.27	857.24	819.89	819.90

