

SUPPLEMENTAL PLAT OF NORTHRIDGE ADDITION NO. 1

DODGE CITY, KANSAS

LOCATED IN THE S 1/2 OF THE NE 1/4 OF SECTION 23; T26S; R25W; FORD COUNTY, KANSAS

DEDICATION:

WE THE UNDERSIGNED, DO HEREBY CERTIFY THAT WE ARE THE OWNERS AND PROPRIETORS OF THE FOLLOWING DESCRIBED TRACT OF LAND UPON WHICH NORTHRIDGE ADDITION NO. 1, A SUBDIVISION THEREOF IS LOCATED, TO WIT; BEGINNING AT THE POINT 30' NORTH OF INTERSECTION OF THE SOUTH LINE OF THE NE 1/4 OF SECTION 23; T26S; R25W; FORD COUNTY, KANSAS, WITH THE WEST LINE OF CENTRAL AVENUE. DODGE CITY, KANSAS, EXTENDED; THENCE CONTINUING NORTH ALONG THE WEST LINE OF SAID CENTRAL AVENUE FOR 1275 FT; THENCE WEST, PARALLEL TO THE SOUTH LINE OF SAID NE 1/4 FOR 464.25 FT; THENCE SOUTHERLY FOR A DISTANCE OF 1275 FT. TO A POINT ON THE SOUTH LINE OF SAID NE 1/4 THAT IS 439.5 FT. WEST OF THE POINT OF BEGINNING; THENCE EAST 439.50 FT. TO PLACE OF BEGINNING.

THIS PLAT IS SUBJECT TO CERTAIN RESTRICTIONS AND RESERVATIONS AS SET FORTH IN A SEPARATE INSTRUMENT OF WRITING AND IS FILED HERewith AND IS RECORDED IN BOOK 9 PAGE 327 IN THE OFFICE OF THE REGISTER OF DEEDS OF FORD COUNTY, KANSAS.

WE FURTHER CERTIFY THAT ALL STREETS, AVENUES, AND ALLEYS INCLUDED IN THIS SUBDIVISION ARE FULLY SET FORTH AND DEFINED IN THE ACCOMPANYING PLAT AND ARE INTENDED TO BE AND ARE HEREBY DEDICATED AND/OR REDEDICATED TO AND FOR PUBLIC USE AND PURPOSE AS HIGHWAYS.

J.L. Hart *Lois L. Hart*
J.L. HART LOIS L. HART

THE PURPOSE OF THIS SUPPLEMENTAL PLAT IS TO CORRECT ERRORS IN THE ORIGINAL PLAT OF NORTHRIDGE ADDITION NO. 1

STATE OF KANSAS SS
COUNTY OF FORD

BE IT REMEMBERED THAT ON THIS 3rd DAY OF June 1957 A.D. BEFORE ME, THE UNDERSIGNED, A NOTARY PUBLIC IN AND FOR THE COUNTY AND STATE AFORE SAID CAME J.L.HART AND LOIS L.HART, HIS WIFE WHO ARE PERSONALLY KNOWN TO ME TO BE THE SAME PERSONS WHO EXECUTED THE WITHIN INSTRUMENT OF WRITING AND THE SAME PERSONS DULY ACKNOWLEDGE THE EXECUTION OF SAME.

IN TESTIMONY WHERE OF I HAVE HEREUNTO SET MY HAND AND AFFIXED MY NOTARIAL SEAL THE DAY AND YEAR ABOVE WRITTEN.

May 23, 1959
MY COMMISSION EXPIRES

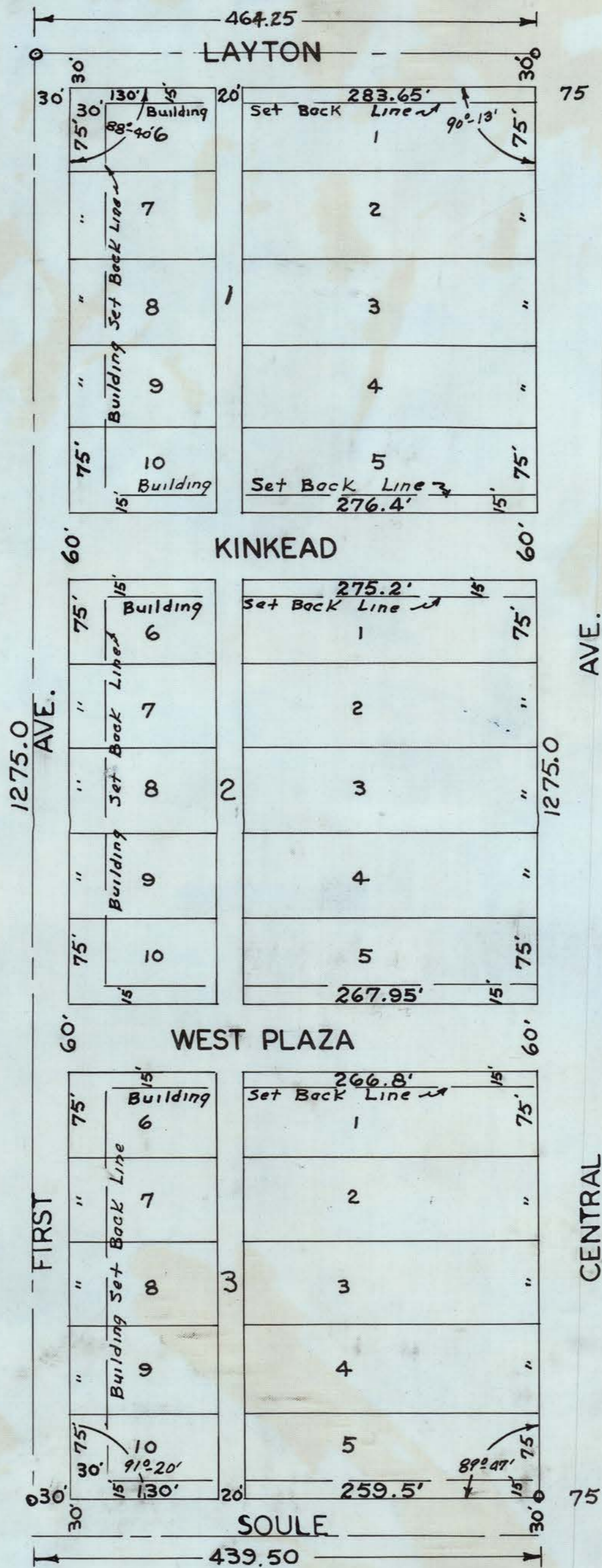
Larry Hensley
NOTARY PUBLIC



ENGINEERS CERTIFICATE:
THE UNDERSIGNED, A PROFESSIONAL ENGINEER, DULY LICENSED IN THE STATE OF KANSAS, DOES HEREBY CERTIFY THAT ALL MEASUREMENTS ARE TRUE AND CORRECT AND THAT ALL STREETS, ALLEYS AND AVENUES ARE AS SHOWN.

DAVIS & RAZAK ENGINEERS

Walter Davis



SCALE 1" = 100'

FILE OF RECORDS, SS.
FORD COUNTY
This instrument was filed in this office
on the 24 day of June A.D.
1957 at 2:15 o'clock P. M.
and duly Recorded in Book C
at Page 42
Fee \$50.00

Jessie School
Register of Deeds

ATTORNEY'S CERTIFICATE:

EXAMINED AND APPROVED BY CITY ATTORNEY

DODGE CITY, KANSAS

THIS 20th DAY OF JUNE 1957

Byron G. Larson
CITY ATTORNEY

APPROVED BY:

BOARD OF COMMISSIONERS DODGE CITY, KANSAS.

THIS 12th DAY OF June 1957

ATTEST
Merle E. Smith
CITY CLERK

W.C. Beale
MAYOR

APPROVAL RECOMMENDED:

CITY PLANNING COMMISSION DODGE CITY, KANSAS

THIS 8th DAY OF June 1957

ATTEST
M.P. Young
CHAIRMAN
Fred Kilduff
SECRETARY

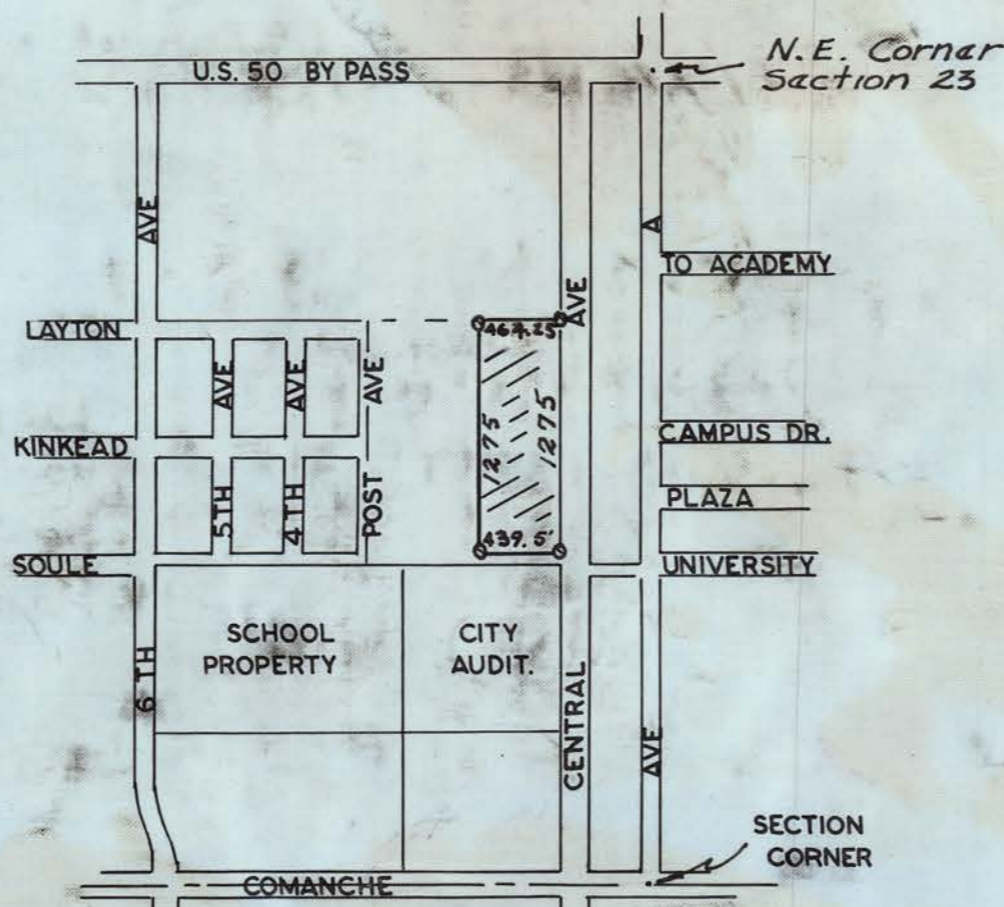
APPROVED BY:

BOARD OF COMMISSIONERS FORD COUNTY, KANSAS.

THIS 15th DAY OF JUNE 1957

ATTEST
W.R. Penland
COUNTY CLERK

Arthur E. Sloan
CHAIRMAN



LOCATION DIAGRAM

