

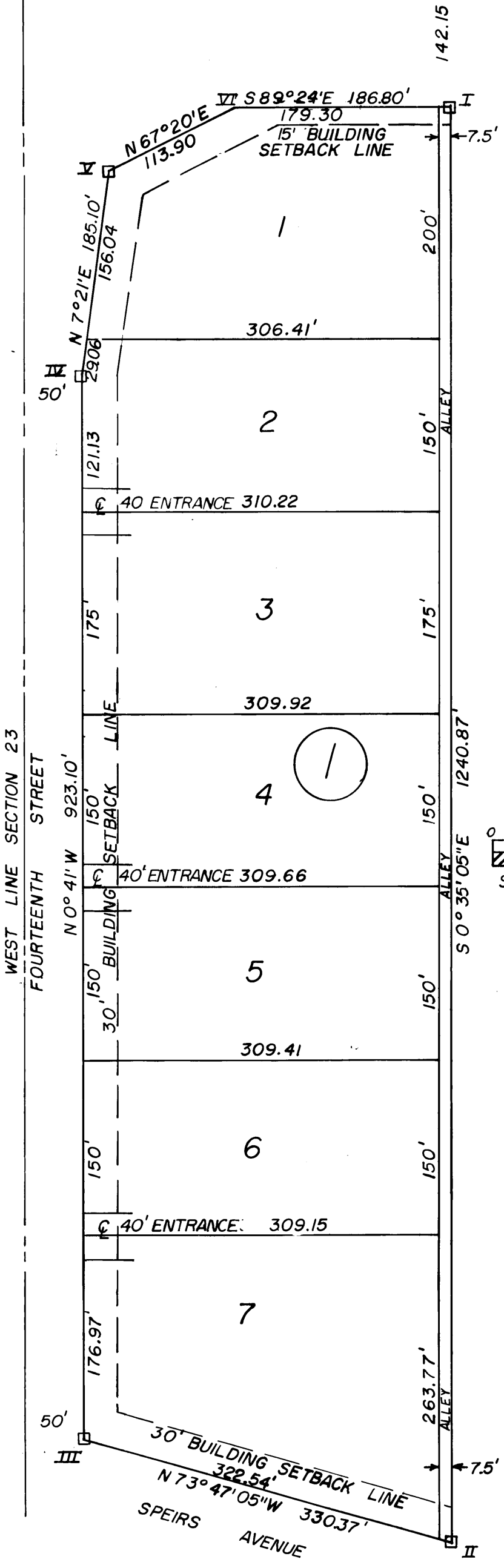
NW CORNER SECTION 23 T26S R25W

NORTH LINE SECTION 23 S 89° 15' E 368.61'

US HIGHWAY 50 BY-PASS

# COMMERCE ADDITION, DODGE CITY, KANSAS

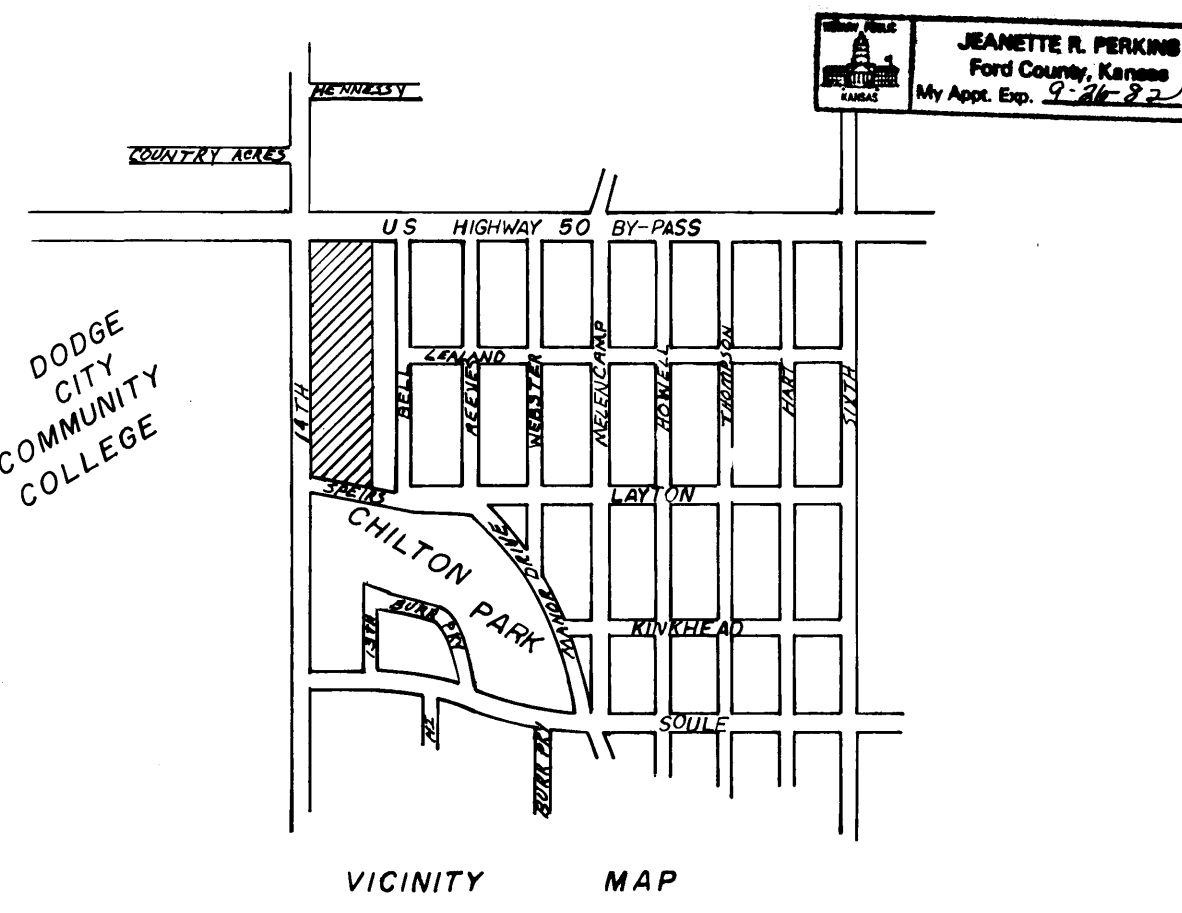
A SUBDIVISION LOCATED IN THE NW 1/4 SECTION 23 - T26S - R25W  
FORD COUNTY, KANSAS



**DEDICATION:**  
WE, THE UNDERSIGNED, DO HEREBY CERTIFY THAT WE ARE THE OWNERS AND PROPRIETORS OF THE FOLLOWING DESCRIBED TRACT OF LAND UPON WHICH COMMERCE ADDITION, A SUBDIVISION THEREOF, IS LOCATED TO WIT:  
COMMENCING AT THE NORTHWEST CORNER OF SECTION 23, TOWNSHIP 26 SOUTH, RANGE 25 WEST, FORD COUNTY, KANSAS; THENCE 89° 15' EAST ALONG THE NORTH LINE OF SAID SECTION 23 FOR 368.61 FEET; THENCE SOUTH 0° 35' 05" EAST FOR 142.15 FEET TO THE POINT OF BEGINNING; THENCE CONTINUING SOUTH 0° 35' 05" EAST ALONG THE WEST LINE OF BEVERLY MANOR ADDITION, A SUBDIVISION IN DODGE CITY, FORD COUNTY, KANSAS, FOR 1240.87 FEET TO A POINT ON THE NORTH LINE OF SPIERS AVENUE, DODGE CITY, KANSAS; THENCE NORTH 73° 47' 05" WEST ALONG THE NORTH LINE OF SPIERS AVENUE FOR 330.37 FEET TO A POINT ON THE EAST RIGHT OF WAY LINE OF FOURTEENTH AVENUE, SAID RIGHT OF WAY LINE BEING PARALLEL TO AND 50.0 FEET EAST OF THE WEST LINE OF SAID SECTION 23; THENCE NORTH 0° 41' WEST ALONG SAID RIGHT OF WAY LINE FOR 923.10 FEET; THENCE NORTH 7° 21' EAST FOR 185.10 FEET; THENCE NORTH 67° 20' EAST FOR 113.90 FEET; THENCE SOUTH 89° 24' EAST FOR 186.80 FEET TO THE POINT OF BEGINNING.  
WE FURTHER CERTIFY THAT ALL STREET, AVENUE, ALLEYS, AND EASEMENTS INCLUDED IN THIS SUBDIVISION ARE FULLY SET FORTH AND DEFINED IN THE ACCOMPANYING PLAT AND ARE INTENDED TO BE AND ARE HEREBY DEDICATED AND OR REDEDICATED TO THE PUBLIC FOR PUBLIC USE.

John E. Fraley  
JOHN E. FRALEY  
Judith A. Fraley  
JUDITH A. FRALEY  
Dennis S. Kindsvater  
DENNIS S. KINDSVATER  
Nolan E. Howard  
NOLAN E. HOWARD  
Kay E. Howard  
KAY E. HOWARD

STATE OF KANSAS  
COUNTY OF FORD SS  
BE IT REMEMBERED THAT ON THIS 30<sup>th</sup> DAY OF Oct., 198, BEFORE ME, A NOTARY IN AND FOR SAID COUNTY AND STATE, CAME JOHN E. FRALEY AND JUDITH A. FRALEY, HIS WIFE, AND DENNIS S. KINDSVATER, AND NOLAN E. HOWARD AND KAY E. HOWARD, HIS WIFE, TO ME PERSONALLY KNOWN TO BE THE SAME PERSONS WHO EXECUTED THE FORGOING INSTRUMENT OF WRITING, AND DULY ACKNOWLEDGE THE EXECUTION OF THE SAME, IN TESTIMONY WHEREOF, I HAVE HEREUNTO SET MY HAND AND AFFIXED MY NOTARIAL SEAL THE DAY AND YEAR ABOVE WRITTEN.  
MY COMMISSION EXPIRES: 9-26-82 NOTARY PUBLIC Dorothy R. Decker



THIS PLAT OF COMMERCE ADDITION HAS BEEN SUBMITTED TO AND APPROVED BY FORD COUNTY REGIONAL PLANNING COMMISSION. THIS 9<sup>th</sup> DAY OF November 1981  
Paul D. Chaffee  
SECRETARY: PAUL D. CHAFFEE  
Gregory B. Starks  
CHAIRMAN: GREGORY B. STARKS

THE DEDICATION SHOWN ON THIS PLAT ACCEPTED BY THE BOARD OF COMMISSIONERS OF FORD COUNTY, FORD COUNTY, KANSAS. THIS 23 DAY OF NOV 1981  
Vern Birney  
COMMISSIONER: VERN BIRNEY  
Edward O. Gibb  
CHAIRMAN: EDWARD O. GIBB  
Wilbur Underwood  
COMMISSIONER: WILBUR UNDERWOOD  
Lucille Keck  
ATTTEST: LUCILLE KECK  
COUNTY CLERK: LUCILLE KECK

THE DEDICATION SHOWN ON THIS PLAT ACCEPTED BY THE BOARD OF CITY COMMISSIONERS OF DODGE CITY, KANSAS. THIS 16 DAY OF Nov. 1981  
Hi Bland  
MAYOR: HI BLAND  
Ron Thornburg  
ATTTEST: RON THORNBURG  
CITY CLERK: RON THORNBURG

STATE OF KANSAS  
COUNTY OF FORD SS  
THIS IS TO CERTIFY THAT THIS INSTRUMENT WAS FILED FOR RECORD IN THE REGISTER OF DEEDS OFFICE ON THE 24 DAY OF Nov. 1981. IN BOOK D PAGE 131. at 9:10 A.M.  
REGISTER OF DEEDS: JUANITA GULICK  
ENTER ON TRANSFER RECORD THIS 24 DAY OF Nov. 1981  
Lucille Keck  
COUNTY CLERK: LUCILLE KECK

I DUNCAN W. DURR, A LICENSED PROFESSIONAL ENGINEER IN THE STATE OF KANSAS, HEREBY CERTIFY THAT I HAVE ACCURATELY SURVEYED AND PLATTED COMMERCE ADDITION AND THAT THE BOUNDARY CORNERS AND CONTROL POINTS HAVE BEEN SET AS REQUIRED BY ORDINANCE.  
BACHENBERG & HOLCOMB ASSOCIATES  
DODGE CITY, KANSAS  
Duncan W. Durr  
DUNCAN W. DURR

REVIEWED AND APPROVED BY COUNTY ENGINEER FORD COUNTY, KANSAS. THIS 23 DAY OF NOV 1981  
F. Dale Smith  
COUNTY ENGINEER: F. DALE SMITH

CLOSURE		COMPUTATIONS					
BEARING	DIST.	SIN	COS	NORTH	SOUTH	EAST	WEST
S 0° 35' 05" E	1240.87	0.0102	0.9999		1240.81	12.67	
N 73° 47' 05" W	330.37	0.9602	0.2795	92.26			317.23
N 0° 41' 00" W	923.10	0.01193	0.9999	923.05			11.01
N 7° 21' 00" E	185.10	0.12793	0.9918	183.58		23.68	
N 67° 20' 00" E	113.90	0.92276	0.38537	43.89		105.10	
S 89° 24' 00" E	186.80	0.9999	0.01047		1.96	186.79	
				1242.77	1242.77	328.24	328.24

- REFERENCES:
- I. NE. CORNER SUBDIVISION
    - 1. 4" X 4" CONCRETE MONUMENT
    - 2. NW CORNER OF BRICK GARAGE 34.3 SE
    - 3. NE CORNER OF BRICK BUILDING 49.55 SW
  - II. SE. CORNER SUBDIVISION
    - 1. 4" X 4" CONCRETE MONUMENT
    - 2. TOP OF TELEPHONE PEDISTAL 38.8 NNE
    - 3. E OF MANHOLE 41.55 S
    - 4. FENCE CORNER 11.67 SE
  - III. SW CORNER SUBDIVISION
    - 1. 4" X 4" CONCRETE MONUMENT
    - 2. EAST BACK OF CURB ON 14TH ST. 23.6 W
    - 3. NORTH FACE OF POWER POLE 1.08 S
  - IV. NW CORNER SUBDIVISION
    - 1. 4" X 4" CONCRETE MONUMENT
    - 2. EAST BACK OF CURB ON 14TH ST. 23.7 W
    - 3. SW BOLT ON BASE OF LIGHT POLE 133.87 NE
  - V. NW CORNER SUBDIVISION
    - 1. 4" X 4" CONCRETE MONUMENT
    - 2. EAST BACK OF CURB ON 14TH ST. 49.5 W
    - 3. S. BACK OF CURB ON FRONTAGE ROAD 38.45 N
    - 4. NW BOLT ON BASE OF LIGHT POLE 94.95 SE
  - VI. NW CORNER SUBDIVISION
    - 1. 1/2" REBAR IN ASPHALT
    - 2. NW CORNER BRICK BUILDING 47.25 SE
    - 3. S. BACK OF CURB ON FRONTAGE ROAD 8.3 N