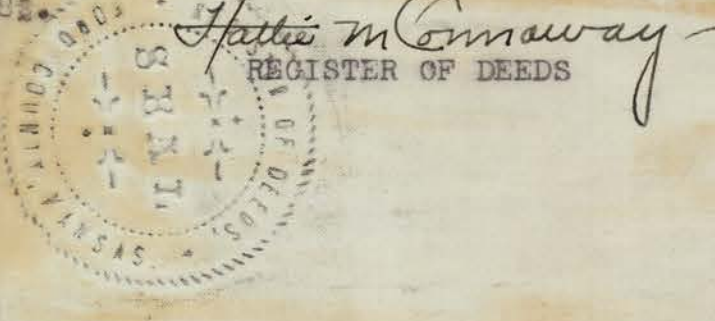


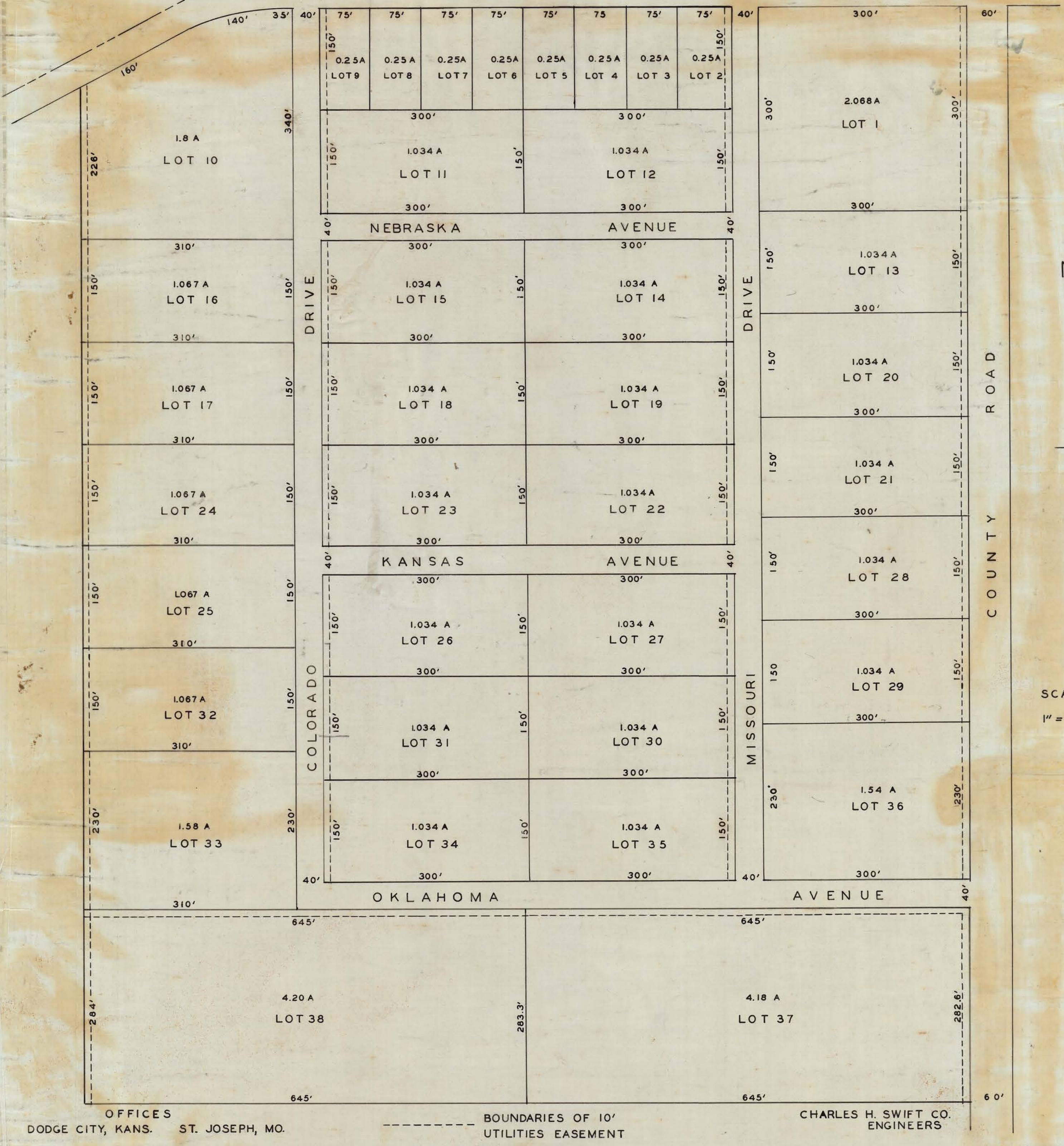
SUN-CREST  
SUB-DIVISION

STATE OF KANSAS, COUNTY OF FORD, ss:  
This instrument was filed for record in this  
office on August 7th, 1946 at 3:30 O'Clock  
P.M., and recorded in Plat Book "C", on  
Page 182.

OF THE EAST 1/2 OF THE NORTH-EAST 1/4 OF  
SECTION 3 TOWNSHIP 27 RANGE 25  
SOUTH OF KANSAS STATE HIGHWAY K45  
IN  
FORD COUNTY KANSAS



STATE HIGHWAY K45



DEDICATION

WE- THE UNDERSIGNED HEREBY CERTIFY THAT WE ARE THE OWNERS AND PROPRIETORS OF THE TRACT OF LAND UPON WHICH SUN-CREST SUB-DIVISION IS PLATTED, AND THAT THE LENGTH, BREADTH AND LOCATION OF ALL LOTS, DRIVES AND AVENUES ARE AS SHOWN ON THIS PLAT AND WE HEREBY DEDICATE ALL DRIVES AND AVENUES TO THE USE OF THE PUBLIC.

*Frank Crawford*  
*Ernestine R. Crawford*

SURVEY

I THE UNDERSIGNED DO CERTIFY THIS TO BE A TRUE AND CORRECT PLAT OF SUN-CREST SUB-DIVISION OF ALL THAT PART OF THE EAST HALF OF THE NORTH-EAST QUARTER OF SECTION 3 TOWNSHIP 27 NORTH RANGE 25 WEST, SOUTH OF KANSAS STATE HIGHWAY K45 BEING IN FORD COUNTY KANSAS.

CHARLES H. SWIFT COMPANY

BY *Charles H. Swift*  
CIVIL ENGINEER

STATE OF KANSAS SS:  
FORD COUNTY

PERSONALLY APPEARED BEFORE ME, A NOTARY PUBLIC IN AND FOR FORD COUNTY KANSAS, J. FRANK CRAWFORD AND ERNESTINE R. CRAWFORD, HIS WIFE, KNOWN TO ME AS THE PARTIES WHO SIGNED THE ABOVE DEDICATION, AND ACKNOWLEDGED THE SAME TO BE THEIR OWN FREE ACT AND DEED.

WITNESS MY HAND AND NOTARY SEAL THIS 7th DAY OF August 1946

MY COMISSION EXPIRES March 15 1949



*J. Frank Crawford*  
NOTARY PUBLIC