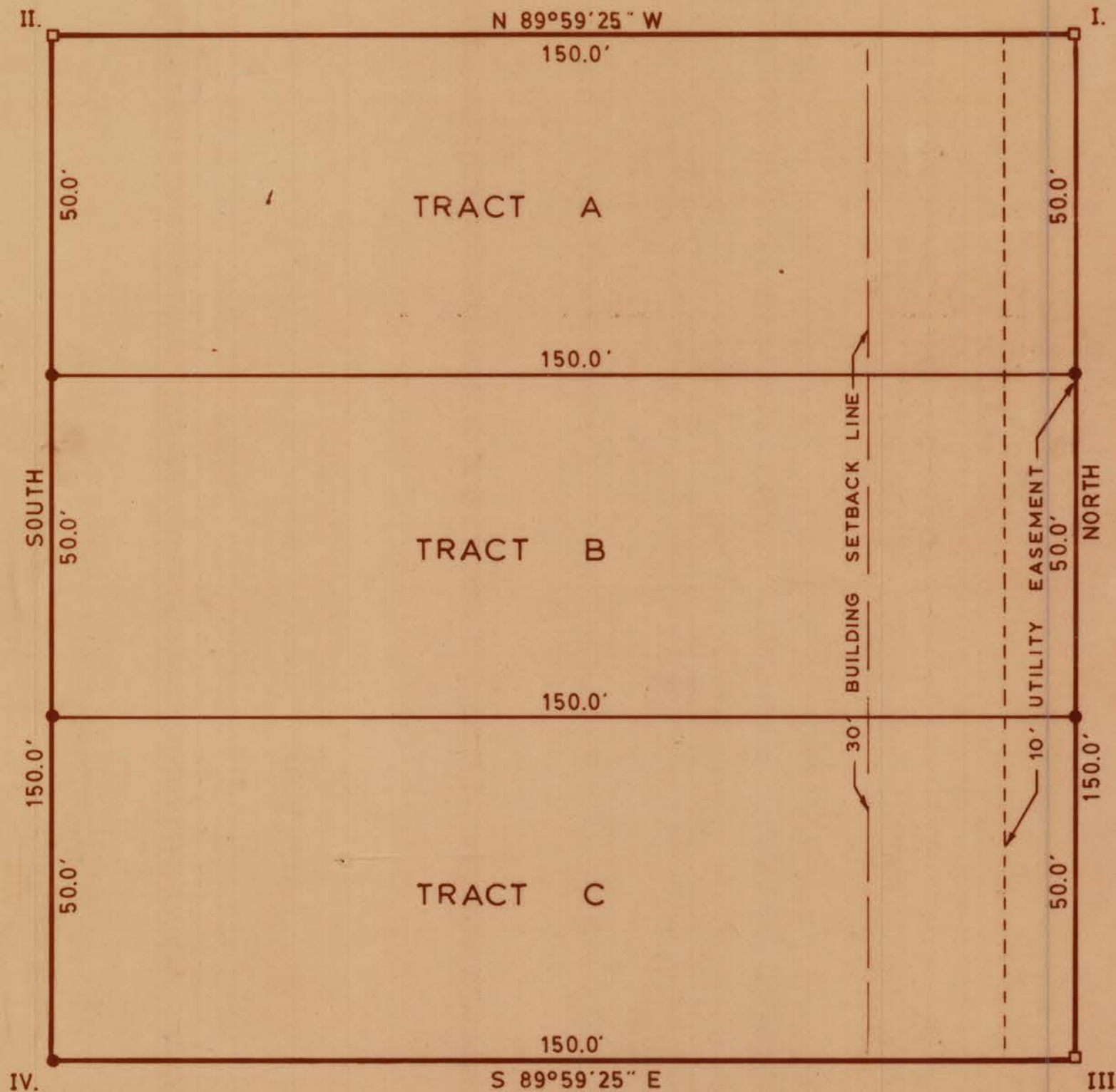


REPLAT OF THE EAST HALF OF LOT 29, SUN-CREST SUBDIVISION

DODGE CITY, FORD COUNTY, KANSAS



FOURTEENTH AVENUE

- LEGEND**
- 4"x4" CONC. MONUMENT
 - 1/2" REBAR WITH CAP

REFERENCES

- | | |
|---|---|
| <p>I) N.E. Corner of Replat</p> <ol style="list-style-type: none"> 1. Set 4"x4" concrete monument 2. Center chain link fc. cor. post 79.21' E-SE. 3. Spk. & wshr. in top of 12" stump 44.99' S. 4. Spk. & wshr. in elm tree 8.70' N-NW. | <p>III) S.E. Corner Replat</p> <ol style="list-style-type: none"> 1. Set 4"x4" concrete monument 2. Spk. & wshr. in fc. post 6.93' S-SE. 3. Center S. riser gas meter 1.33' E-NE. 4. Spk. & wshr. in 12" elm 2.22' S.W. |
| <p>II) N.W. Corner of Replat</p> <ol style="list-style-type: none"> 1. Set 4"x4" concrete monument 2. S.W. cor. of garage 9.83' N.E. 3. Spk. & wshr. in 4"x4" fc. post 53.46' E-SE. 4. Spk. & wshr. in top of 24" stump 2.58' S. | <p>IV) S.W. Corner Replat</p> <ol style="list-style-type: none"> 1. Set 1/2" rebar with cap 2. Spk. & wshr. in 6" elm 0.3' East. 3. Spk. & wshr. in fc. post 6.07' S.W. 4. Spk. & wshr. in fc. cor. post 2.4' S. |

CLOSURE COMPUTATIONS

BEARINGS	DISTANCE	SIN	COS	NORTH	SOUTH	EAST	WEST
NORTH	150.0'	0.0000	1.0000	150.0000			
N 89°59'25"W	150.0'	1.0000	0.0002	0.0255			150.0000
SOUTH	150.0'	0.0000	1.0000		150.0000		
S 89°59'25"E	150.0'	1.0000	0.0002		0.0255	150.0000	
TOTALS	600.0'			150.0255	150.0255	150.0000	150.0000



DEDICATION:
 WE, THE UNDERSIGNED, DO HEREBY CERTIFY THAT WE ARE THE OWNERS AND PROPRIETORS OF THE EAST HALF OF LOT 29, SUN-CREST SUBDIVISION, DODGE CITY, FORD COUNTY, KANSAS, UPON WHICH THE REPLAT OF THE EAST HALF OF SAID LOT 29 IS LOCATED; AND WHICH IS MORE FULLY DESCRIBED AS FOLLOWS: BEGINNING AT THE SOUTHEAST CORNER OF LOT 29 SUN-CREST SUBDIVISION, A SUBDIVISION OF PART OF THE NORTHEAST QUARTER OF SECTION 3, TOWNSHIP 27 SOUTH, RANGE 25 WEST, DODGE CITY, FORD COUNTY, KANSAS; THENCE NORTH ALONG THE EAST LINE OF SAID LOT 29 FOR 150.0 FEET TO THE NORTHEAST CORNER OF SAID LOT 29, THENCE NORTH 89°59'25" WEST ALONG THE NORTH LINE OF SAID LOT 29 FOR 150.0 FEET; THENCE SOUTH PARALLEL WITH THE EAST LINE OF SAID LOT 29, FOR 150.0 FEET TO A POINT ON THE SOUTH LINE OF SAID LOT 29; THENCE SOUTH 89°59'25" EAST ALONG THE SOUTH LINE OF SAID LOT 29 FOR 150.0 FEET TO THE POINT OF BEGINNING.

WE FURTHER CERTIFY THAT ALL STREETS, AVENUES, ALLEYS, AND EASEMENTS INCLUDED IN THIS REPLAT ARE FULLY SET FORTH AND DEFINED IN THE ACCOMPANYING PLAT AND ARE INTENDED TO BE AND ARE HEREBY DEDICATED AND OR REDEDICATED TO THE PUBLIC FOR PUBLIC USE.

Clair Fountain *Bonnie Lee Fountain*
 CLAIR FOUNTAIN BONNIE LEE FOUNTAIN

THIS REPLAT OF THE EAST HALF OF LOT 29, SUN-CREST SUBDIVISION HAS BEEN SUBMITTED AND APPROVED BY THE FORD COUNTY REGIONAL PLANNING COMMISSION, THIS 8th DAY OF May, 1989.

Nannette Lampe *Harold Houff*
 SECRETARY: NANNETTE LAMPE CHAIRMAN: HAROLD HOUFF

THE DEDICATION SHOWN ON THIS REPLAT ACCEPTED BY THE BOARD OF CITY COMMISSIONERS OF DODGE CITY, KANSAS, THIS 15th DAY OF May, 1989.

Dale R. Northern
 MAYOR: DALE NORTHERN CITY CLERK: RON THORNBURG

THE DEDICATION SHOWN ON THIS REPLAT ACCEPTED BY THE BOARD OF COMMISSIONERS OF FORD COUNTY, KANSAS, THIS 12 DAY OF December, 1991.

Kent A. Stehlik *Laura Carlson*
 CHAIRMAN: KENT A. STEHLIK COMMISSIONER: LAURA CARLSON

Kenneth Hurley
 COMMISSIONER: KENNETH HURLEY

Joleen K. Stein, Deputy
 COUNTY CLERK: RITA SLATTERY

REVIEWED AND APPROVED BY COUNTY ENGINEER OF FORD COUNTY, KANSAS, THIS 12th DAY OF December, 1991.

Christopher M. Carrier, PE.
 COUNTY ENGINEER: CHRISTOPHER M. CARRIER, PE.

STATE OF KANSAS
 COUNTY OF FORD SS

THIS IS TO CERTIFY THAT THIS INSTRUMENT WAS FILED FOR RECORD IN THE REGISTER OF DEEDS OFFICE ON THIS 20 DAY OF Feb., 1991, IN BOOK D, PAGE 196, 1992 at 4:15 P.M.

Juanita Gulick
 REGISTER OF DEEDS: JUANITA GULICK

ENTERED ON TRANSFER RECORD THIS 20 DAY OF Feb., 1991.

Rita A. Slattery
 COUNTY CLERK: RITA SLATTERY

STATE OF KANSAS SS
 COUNTY OF FORD

BE IT REMEMBERED THAT ON THIS 3 DAY OF Jan, 1989, BEFORE ME, A NOTARY PUBLIC IN AND FOR SAID COUNTY AND STATE, CAME CLAIR FOUNTAIN AND BONNIE LEE FOUNTAIN, HIS WIFE, TO ME PERSONALLY KNOWN TO BE THE SAME PERSONS WHO EXECUTED THE FOREGOING INSTRUMENT OF WRITING, AND DULY ACKNOWLEDGE THE EXECUTION OF THE SAME IN TESTIMONY WHERE OF, I HAVE HERE UNTO SET MY HAND AND AFFIXED MY NOTARIAL SEAL THE SAME DAY AND YEAR ABOVE WRITTEN.

MY COMMISSION EXPIRES Oct 9 1993
Mark King
 NOTARY PUBLIC



I, TERRY L. WALTERS, A REGISTERED LAND SURVEYOR IN THE STATE OF KANSAS, HEREBY CERTIFY THAT I HAVE ACCURATELY SURVEYED AND REPLATED THE EAST HALF OF LOT 29, SUN-CREST SUBDIVISION, DODGE CITY, FORD COUNTY, KANSAS, AND THAT THE BOUNDARY CORNERS AND CONTROL POINTS HAVE BEEN SET AS REQUIRED BY STATUTE.

DATE: 4-26-89
Terry L. Walters
 TERRY L. WALTERS
 REGISTERED LAND SURVEYOR