

NW. COR SEC. 2
T-27S. R-25W.

REPLAT OF NORTH 400 FEET, BLOCK 2, MILLER SUBDIVISION #1 DODGE CITY, KANSAS LOCATED IN THE WEST 1/2 SECTION 2, TWP 27 S., RGE. 25 W. FORD COUNTY, KANSAS

DEDICATION:

WE THE UNDERSIGNED DO HEREBY CERTIFY THAT WE ARE THE OWNERS AND PROPRIETORS OF THE FOLLOWING DESCRIBED, NORTH 400 FEET OF BLOCK 2, MILLER SUBDIVISION NO.1, AN ADDITION TO DODGE CITY, KANSAS, LOCATED IN THE WEST 1/2 OF SECTION 2, TWP. 27S., RGE. 25W., FORD COUNTY, KANSAS, TO WIT: BEGINNING 1043.5 FEET SOUTH AND 30 FEET EAST OF THE N.W. CORNER OF SECTION 2, THENCE SOUTH 89°40' EAST FOR 150 FEET; THENCE SOUTH FOR 400 FEET; THENCE NORTH 89°40' WEST FOR 150 FEET THENCE NORTH FOR 400 FEET TO THE POINT OF BEGINNING.

AND THAT ALL AVENUES ROADS AND EASEMENTS AS SHOWN ON THE ACCOMPANYING PLAT ARE DEDICATED FOR PUBLIC USE.

Jerry A. Degarmo
JERRY A. DEGARMO *Loetta J. Degarmo*
LOETTA J. DEGARMO

Jerry D. Halbgewachs
JERRY D. HALBGEWACHS
FIRST NATIONAL BANK

THIS REPLAT OF THE NORTH 400 FEET OF BLOCK 2 MILLER SUBDIVISION NO.1 HAS BEEN SUBMITTED AND APPROVED BY THE FORD COUNTY REGIONAL PLANNING COMMISSION. THIS 10 DAY OF August, 1981

Tim Wentzl
SECRETARY: TIM WENTZL *Greg Starks*
CHAIRMAN: GREG STARKS

THE DEDICATION SHOWN ON THIS PLAT ACCEPTED BY THE BOARD OF COMMISSIONERS OF FORD COUNTY, KANSAS THIS 24 DAY OF Aug., 1981

Vern Birney
COMMISSIONER: VERN BIRNEY *Edward O. Gibb*
CHAIRMAN: EDWARD O. GIBB

Wilbur Underwood
COMMISSIONER: WILBUR UNDERWOOD

ATTEST: *Lucille Keck*
COUNTY CLERK: LUCILLE KECK

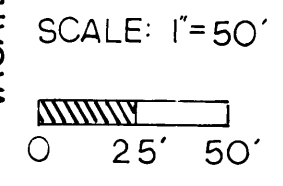
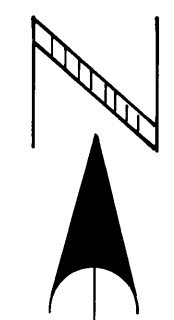
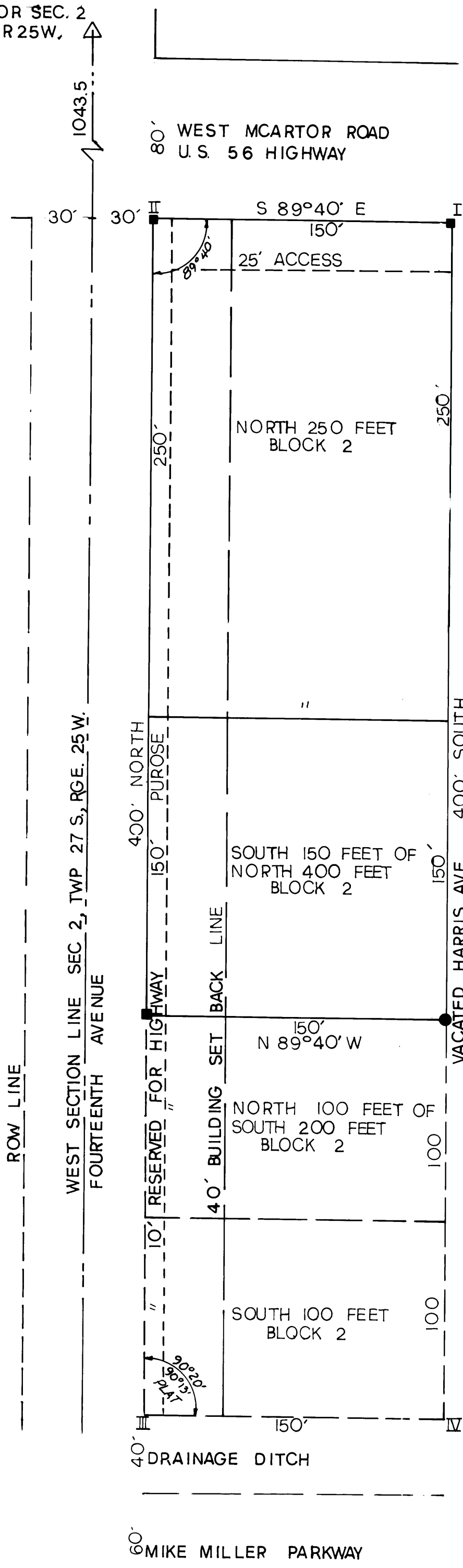
THE DEDICATION SHOWN ON THIS PLAT ACCEPTED BY THE BOARD OF CITY COMMISSIONERS OF DODGE CITY, KANSAS THIS 17 DAY OF August, 1981

Hi Bland
MAYOR: HI BLAND *Ron Thornburg*
CITY CLERK: RON THORNBURG

STATE OF KANSAS SS
COUNTY OF FORD SS
THIS IS TO CERTIFY THAT THIS INSTRUMENT WAS FILED FOR RECORD IN THE REGISTER OF DEEDS OFFICE ON THE 26 DAY OF Aug., 1981 IN BOOK D PAGE 128 at 1:45 P.M.

REGISTER OF DEEDS: JUANITA GULICK
ENTER ON TRANSFER RECORD THIS 26 DAY OF Aug., 1981

Lucille Keck
COUNTY CLERK: LUCILLE KECK



STATE OF KANSAS SS
COUNTY OF FORD

BE IT REMEMBERED THAT ON THIS 29th DAY OF July, 1981, BEFORE ME, A NOTARY PUBLIC IN AND FOR SAID COUNTY AND STATE, CAME JERRY A. DEGARMO AND LOETTA J. DEGARMO, HIS WIFE, AND JERRY D. HALBGEWACHS, TO ME PERSONALLY KNOWN TO BE THE SAME PERSONS WHO EXECUTED THE FORGOING INSTRUMENT OF WRITING AND DULY ACKNOWLEDGED THE EXECUTION OF THE SAME, IN TESTIMONY WHEREOF, I HAVE HEREUNTO SET MY HAND AND AFFIXED MY NOTARIAL SEAL THE DAY AND YEAR ABOVE WRITTEN.

MY COMMISSION EXPIRES 3-1-82
NOTARY PUBLIC *Veri Brady*

REFERENCES:

- | | | | |
|----------------|-----------------------------|----------------------------------|------------------------------------|
| I NE. CORNER | 1. 4"X 4" CONCRETE MONUMENT | 2. POWER POLE IS 1.4' SW. | 3. SPIKE IN POWER POLE IS 71.8' W. |
| II NW. CORNER | 1. 4"X 4" CONCRETE MONUMENT | 2. TOP FIRE HYDRANT IS 79.15' N. | 3. SPIKE IN POWER POLE 2.15' SE. |
| III SW. CORNER | 1. 4"X 4" CONCRETE MONUMENT | 2. SPIKE IN POWER POLE 79.93' S. | 3. NW. COR. FENCE 74.95' E. |
| IV SE. CORNER | 1. 2" FENCE POST | 2. NW. COR. FENCE 75.05' W. | 3. CONCRETE WALL 0.65' E. |

CLOSURE COMPUTATIONS:

| BEARING | DIST. | SIN | COS. | NORTH | SOUTH | EAST | WEST |
|------------|-------|-------|------|--------|---------|--------|--------|
| S 89°40' E | 150' | 1.000 | .006 | | 0.87' | 150.00 | |
| SOUTH | 400' | 1.000 | | | 400.00' | | |
| N 89°40' W | 150' | 1.000 | .006 | 0.87 | | | 150.00 |
| NORTH | 400' | 1.000 | | 400.00 | | | |

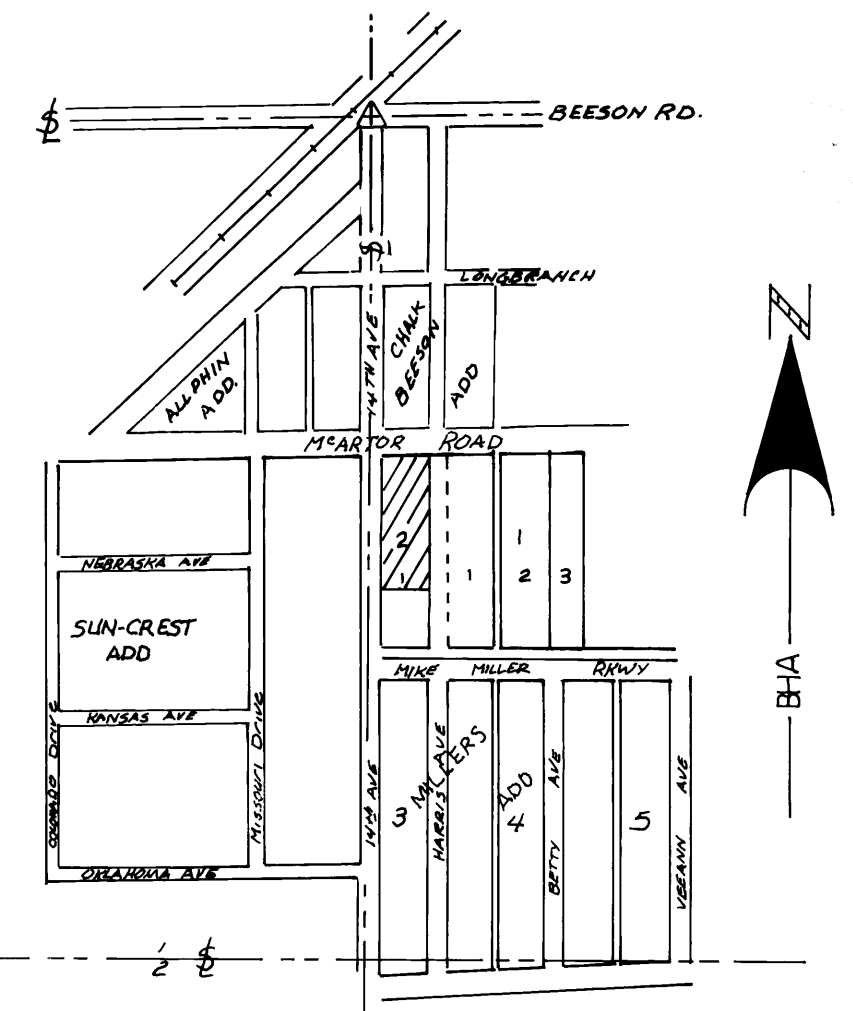
REVIEWED AND APPROVED BY COUNTY ENGINEER FORD COUNTY, KANSAS THIS 24 DAY OF AUG, 1981.

F. Dale Smith
F. DALE SMITH

I DUNCAN W. DURR A LICENSED PROFESSIONAL ENGINEER IN THE STATE OF KANSAS HEREBY CERTIFY THAT I HAVE ACCURATELY SURVEYED AND THAT THE BOUNDARY CORNERS AND CONTROL POINTS HAVE BEEN SET AS REQUIRED BY ORDINANCE FOR THIS REPLAT OF THE NORTH 400 FEET OF BLOCK 2, MILLER SUBDIVISION #1

BACHENBERG HOLCOMB ASSOCIATES
DODGE CITY, KANSAS

Duncan W. Durr
DUNCAN W. DURR



LOCATION MAP