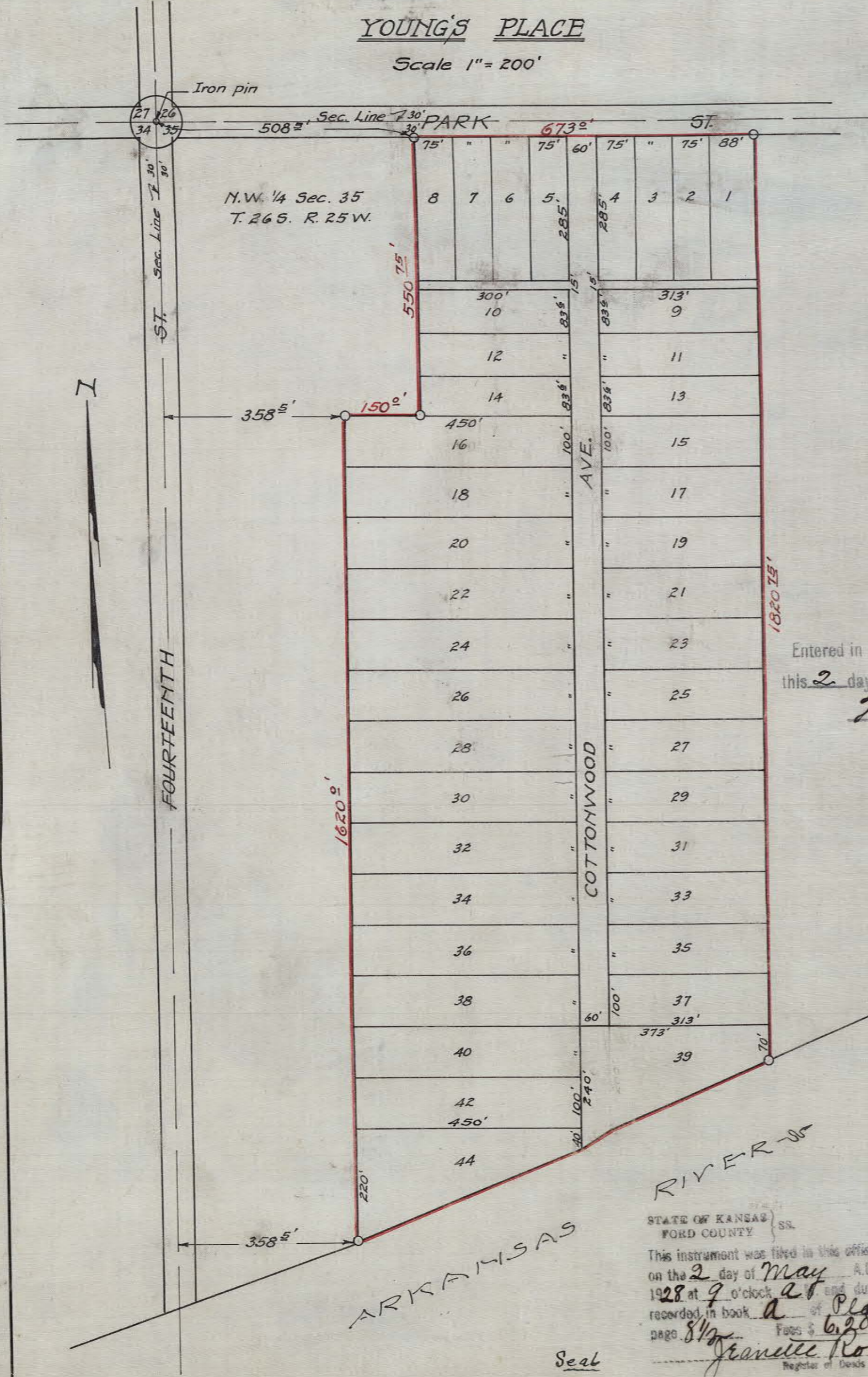


YOUNG'S PLACE

Scale 1" = 200'



~ SURVEY ~  
I, the undersigned, hereby certify that the accompanying plat was made from notes of actual survey and that the dimensions of all tracts (or lots) and streets (or roads) are correctly shown on said plat.

Sutton M. Thomas  
Civil Engineer.

~ DEDICATION ~

I, P. H. Young, owner and proprietor of the following described tract of land upon which "Young's Place" is platted:-  
"Commencing at an iron pin which marks the corner common to Sections 26-27-34 and 35, Twp. 26 S. Rge. 25 W; thence East along the section line 508 feet; thence South 30 feet to the place of beginning; thence South, parallel to the West line of said section 35, 550 feet; thence West 150 feet; thence South, parallel to the West line of said section 35, 1620 feet to the North bank of the Arkansas River; thence in a Northeasterly direction along the North bank of said river to a point 1181 feet East of the West line of said section 35; thence North and parallel to the West line of section 35, 1820 feet to the South line of Park Street; thence West 673 feet to the place of beginning;" hereby certify that the length, breadth and location of all tracts (or lots) and streets (or roads) are as shown on this plat; that all streets (or roads) and alleys are hereby dedicated to the use of the public.

P. H. Young

Entered in Transfer Record in my Office  
this 2 day of May A. D. 1928  
W. H. Wickstead  
COUNTY CLERK

RECOMMENDED FOR APPROVAL BY  
- CITY PLANNING BOARD -

Geo. Cochran  
Chairman

Attest:  
Anna A. Sutton  
Secretary

~ APPROVAL OF CITY COMMISSION ~

I hereby certify that the accompanying plat was approved by the Board of Commissioners of Dodge City Kansas at a regular meeting held the 25 day of April 1928.

Attest: E. C. Harkaway Mayor  
City Clerk.

~ ACKNOWLEDGEMENT ~

STATE OF KANSAS } ss  
FORD COUNTY }

Personally appeared before me, a Notary Public in and for Ford County Kansas, P. H. Young, known to me to be the person who signed the above certificate of dedication and duly acknowledged the execution of the same.

Witness my hand and seal this 20 day of March 1928.

Jessie M. Snyder  
Notary Public.

My commission expires Nov. 5, 1931

STATE OF KANSAS } ss  
FORD COUNTY }  
This instrument was filed in this office on the 2 day of May A.D. 1928 at 9 o'clock a and duly recorded in book a of Plats page 812 Fees \$ 6.20  
Jeanette Rose  
Register of Deeds  
Deputy

Seal

Original blue printed on paper