

# WILKINSON PLACE

## SUBDIVISION No. 2

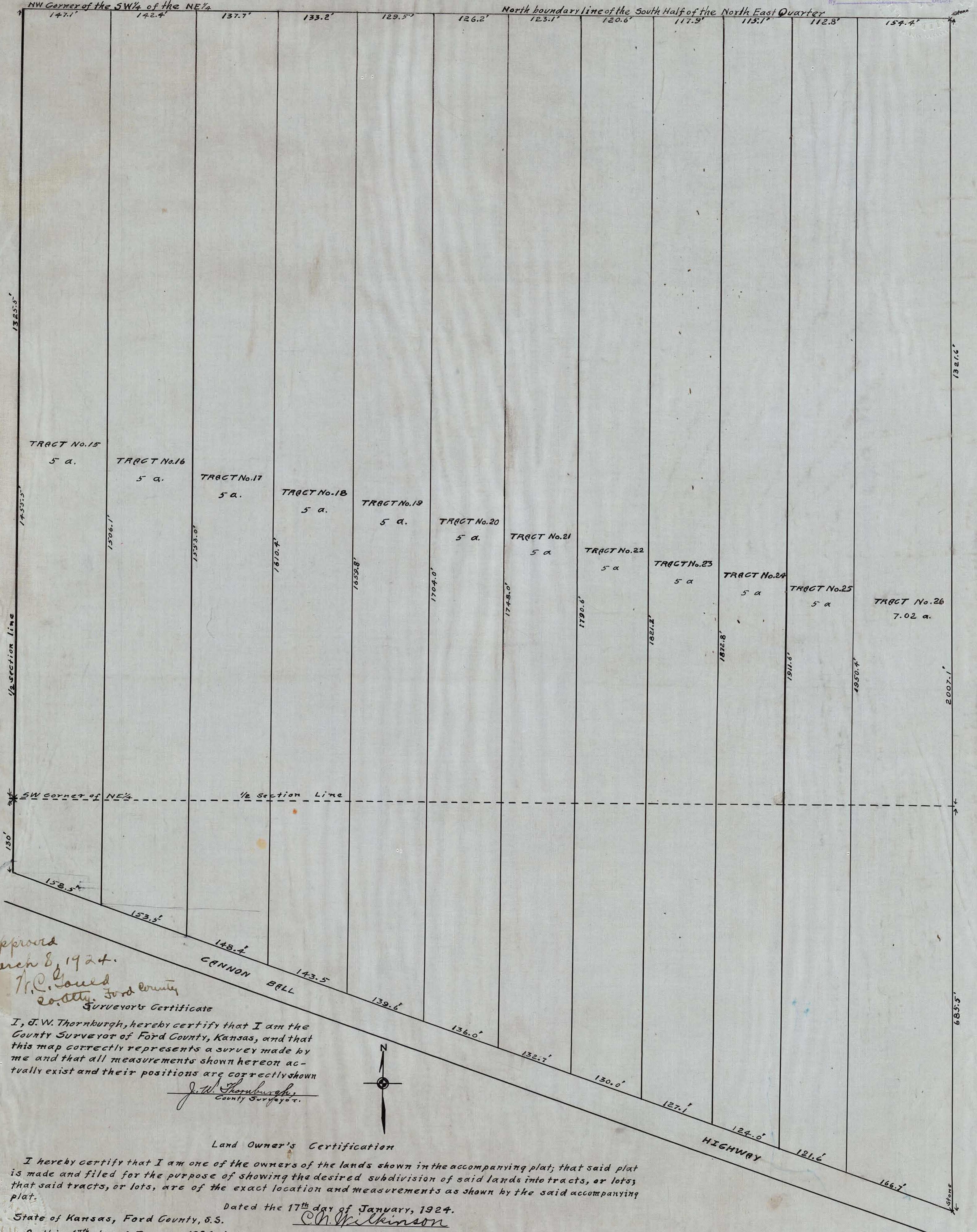
LOCATED IN

Section 32, Township 26, Range 24, W.

FORD COUNTY, KANSAS.

Entered in Transfer Record in my Office  
this 22 day of March A. D. 1924  
*H. H. Kinkaid*  
COUNTY CLERK

STATE OF KANSAS  
FORD COUNTY  
This instrument was filed in this office  
on the 22 day of March A. D.  
1924 at 9 o'clock P. M. and duly  
recorded in Book B of Plats  
Page 37 1/2 of Page 200  
*Jeanette Rose*  
Register of Deeds



Approved  
March 8, 1924.  
*H. C. Gould*  
County Surveyor  
Ford County

I, J. W. Thornburgh, hereby certify that I am the County Surveyor of Ford County, Kansas, and that this map correctly represents a survey made by me and that all measurements shown hereon actually exist and their positions are correctly shown.  
*J. W. Thornburgh*  
County Surveyor.

Land Owner's Certification

I hereby certify that I am one of the owners of the lands shown in the accompanying plat; that said plat is made and filed for the purpose of showing the desired subdivision of said lands into tracts, or lots; that said tracts, or lots, are of the exact location and measurements as shown by the said accompanying plat.

Dated the 17<sup>th</sup> day of January, 1924.  
*G. N. Wilkinson*

State of Kansas, Ford County, S.S.  
On this 17<sup>th</sup> day of January, 1924, before me, a Notary Public of said Ford County, Kansas, personally appeared the above named G. N. Wilkinson, who is personally known to me to be the same person who executed the foregoing certification, and person duly acknowledged the execution of the same.

In testimony whereof, I have hereunto set my hand and affixed my official seal the day and year last above written.

My commission expires June 23, 1927

*H. C. Gould*  
Notary Public