

# REPLAT OF TRACT 4 - SUNNYSIDE ADDITION

DODGE CITY, KANSAS

LOCATED IN THE SOUTH HALF OF SECTION 35, T.26S., R.25W.

FORD COUNTY, KANSAS

**DEDICATION:**

WE THE UNDERSIGNED DO HEREBY CERTIFY THAT WE ARE THE OWNERS AND PROPRIETORS OF THE FOLLOWING DESCRIBED TRACT OF LAND UPON WHICH "REPLAT OF TRACT 4 - SUNNYSIDE ADDITION", A SUBDIVISION THEREOF, IS LOCATED TO WIT: PART OF THE SOUTH HALF OF SECTION 35, T.26S., R.25W., FORD COUNTY, KANSAS, AND BEING MORE PARTICULARLY DESCRIBED AS FOLLOWS: COMMENCING FOR A POINT OF BEGINNING AT A 3/4" REBAR SET AT THE NORTHEAST CORNER OF TRACT 4, SUNNYSIDE ADDITION, ACCORDING TO A PLAT THEREOF RECORDED IN PLAT BOOK A, PAGE 51 1/2, IN THE FORD COUNTY, KANSAS REGISTER OF DEEDS OFFICE; THENCE S.00°24'48"W. ALONG THE EAST LINE OF SAID TRACT 4 FOR A DISTANCE OF 394.33 FEET TO A 3/4" REBAR SET ON THE NORTH RIGHT OF WAY LINE OF GRANT STREET; THENCE N.89°23'12"W. ALONG THE NORTH RIGHT OF WAY LINE OF SAID GRANT STREET FOR A DISTANCE OF 110.0 FEET TO A 3/4" REBAR SET; THENCE N.00°24'48"E. ALONG THE WEST LINE OF SAID TRACT 4 FOR A DISTANCE OF 394.13 FEET TO A 3/4" REBAR SET ON THE SOUTH RIGHT OF WAY LINE OF MARKET STREET; THENCE S.89°29'42"E. ALONG THE SOUTH RIGHT OF WAY LINE OF SAID MARKET STREET FOR A DISTANCE OF 110.0 FEET TO THE POINT OF BEGINNING.

WE FURTHER CERTIFY THAT ALL STREETS, AVENUES AND EASEMENTS, IF ANY, INCLUDED IN THIS SUBDIVISION ARE FULLY SET FORTH AND DEFINED IN THE ACCOMPANYING PLAT AND ARE INTENDED TO BE AND ARE HEREBY DEDICATED AND OR REDEDICATED TO AND FOR PUBLIC USE AND PURPOSE AS HIGHWAYS AND EASEMENTS.

BY: Edith Townsdin  
EDITH TOWNSDIN

STATE OF KANSAS  
COUNTY OF FORD SS

BE IT REMEMBERED THAT ON THIS 28<sup>th</sup> DAY OF March, 1983, BEFORE ME, A NOTARY PUBLIC IN AND FOR SAID COUNTY AND STATE, CAME EDITH TOWNSDIN, TO ME PERSONALLY KNOWN TO BE THE SAME PERSON WHO EXECUTED THE FORGOING INSTRUMENT OF WRITING AND DULY ACKNOWLEDGED THE EXECUTION OF SAME. IN TESTIMONY WHEREOF, I HAVE HEREUNTO SET MY HAND AND AFFIXED MY NOTARIAL SEAL THE DAY AND YEAR ABOVE WRITTEN.

MY COMMISSION EXPIRES 4-15-84 John S. Flouren  
NOTARY PUBLIC

WE, RANDALL L. STOUT, REGISTERED LAND SURVEYOR, AND JOHN W. BURKE, LICENSED PROFESSIONAL ENGINEER, IN THE STATE OF KANSAS, HEREBY CERTIFY THAT WE HAVE ACCURATELY SURVEYED AND PLATTED "REPLAT OF TRACT 4 - SUNNYSIDE ADDITION," AND THAT BOUNDARY CORNERS AND CONTROL POINTS HAVE BEEN SET AS INDICATED ON THIS PLAT.

Randall L. Stout  
RANDALL L. STOUT, R.L.S.

DATE March 26, 1983

John W. Burke  
JOHN W. BURKE, P.E.

DATE Mar. 26, 1983



THIS REPLAT OF TRACT 4 - SUNNYSIDE ADDITION HAS BEEN SUBMITTED TO AND APPROVED BY THE FORD COUNTY REGIONAL PLANNING COMMISSION THIS 18<sup>th</sup> DAY OF April, 1983.

Paul D. Chaffee SECRETARY - PAUL D. CHAFFEE  
Alfred F. Steimel CHAIRMAN - ALFRED F. STEIMEL

THE DEDICATIONS SHOWN ON THIS PLAT ACCEPTED BY THE BOARD OF CITY COMMISSIONERS OF THE CITY OF DODGE CITY, KANSAS, THIS 18 DAY OF April, 1983.

ATTEST: Ron Thornburg CITY CLERK - RON THORNBURG  
Beard Benbow-Loveray MAYOR

THE DEDICATIONS SHOWN ON THIS PLAT ACCEPTED BY THE BOARD OF COUNTY COMMISSIONERS OF FORD COUNTY, KANSAS THIS 25 DAY OF April, 1983.

Edward O. Gibb CHAIRMAN - EDWARD O. GIBB  
Vern Birney COMMISSIONER - VERN BIRNEY  
ATTEST: Lucille Keck COUNTY CLERK - LUCILLE KECK  
Robert Sobba COMMISSIONER - ROBERT L. SOBBA

ENTERED ON TRANSFER RECORDS THIS 25 DAY OF April, 1983.

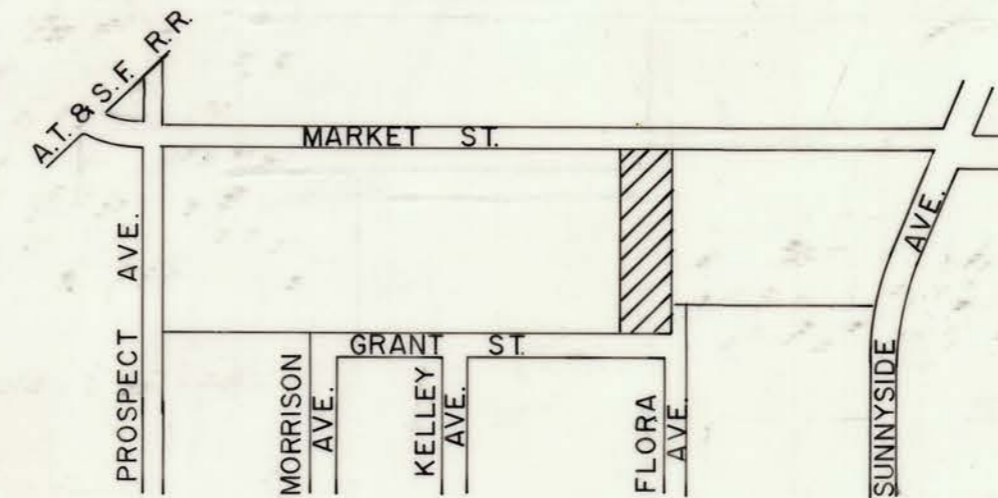
Lucille Keck  
COUNTY CLERK - LUCILLE KECK

STATE OF KANSAS  
COUNTY OF FORD SS

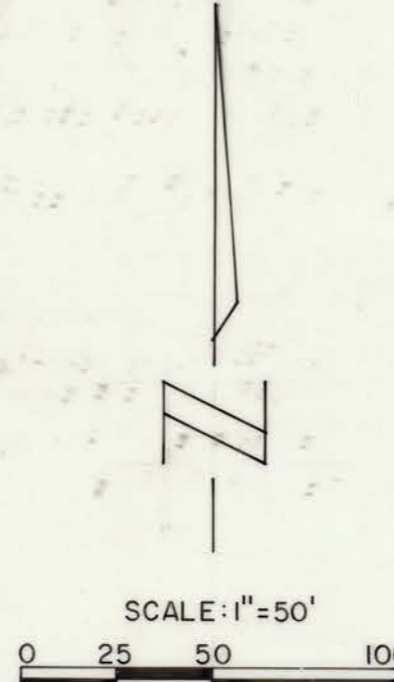
THIS IS TO CERTIFY THAT THIS INSTRUMENT WAS FILED FOR RECORD IN THE REGISTER OF DEEDS OFFICE ON THE 25 DAY OF April, 1983, IN BOOK D, PAGE 146, 3:23 P.M. 3/20/83 Juanita Gulick  
REGISTER OF DEEDS - JUANITA GULICK

REVIEWED AND APPROVED BY COUNTY ENGINEER FORD COUNTY KANSAS THIS 25<sup>th</sup> DAY OF APRIL 1983.

F. Dale Smith  
COUNTY ENGINEER: F. DALE SMITH



LOCATION MAP  
1" = 400'



**NOTES**

- --- denotes 3/4" x 36" rebar set
- --- denotes 1/2" x 24" rebar set

BASIS OF BEARINGS: NORTH RIGHT OF WAY LINE OF GRANT STREET ACCORDING TO COCHRAN REPLAT OF PART OF TRACTS C & D, SUNNYSIDE ADDITION.

