

REPLAT OF BLOCK 4, GLADDEN ADDITION

DODGE CITY, KANSAS

PART OF THE NORTHEAST QUARTER OF SECTION 2, TOWNSHIP 27 SOUTH, RANGE 25 WEST
FORD COUNTY, KANSAS

WE, THE UNDERSIGNED, DO HEREBY CERTIFY THAT WE ARE THE OWNERS AND PROPRIETORS OF BLOCK 4, GLADDEN ADDITION, DODGE CITY, KANSAS, UPON WHICH REPLAT OF BLOCK 4, GLADDEN ADDITION, DODGE CITY, KANSAS, A SUBDIVISION THEREOF, IS LOCATED.

WE FURTHER CERTIFY THAT ALL STREETS, AVENUES AND EASEMENTS INCLUDED IN THIS SUBDIVISION ARE FULLY SET FORTH AND DEFINED IN THE ACCOMPANYING PLAT AND ARE INTENDED TO BE AND ARE HEREBY DEDICATED AND OR REDEDICATED TO AND FOR PUBLIC USE AND PURPOSE AS HIGHWAYS.

DICON CONSTRUCTION, INC.

BY: *Tom Immenschuh*
TOM IMMENSCHUH - PRESIDENT

BY: *R. J. Dillon*
R. J. DILLON - SECRETARY-TREASURER

STATE OF KANSAS SS
COUNTY OF FORD

BE IT REMEMBERED THAT ON THIS 12 DAY OF March, 1976, BEFORE ME, A NOTARY PUBLIC IN AND FOR SAID COUNTY AND STATE CAME TOM IMMENSCHUH AND R. J. DILLON; TO ME PERSONALLY KNOWN TO BE THE SAME PERSONS WHO EXECUTED THE FORGOING INSTRUMENT OF WRITING AND DULY ACKNOWLEDGED THE EXECUTION OF SAME. IN TESTIMONY WHEREOF, I HAVE HEREUNTO SET MY HAND AND AFFIXED MY NOTARIAL SEAL THE DAY AND YEAR ABOVE WRITTEN.

MY APPOINTMENT EXPIRES 10-15-79

Edith M. Smyres
NOTARY PUBLIC

COUNTRYSIDE MANOR, INC.

BY: *Kenneth L. Gladden*
KENNETH L. GLADDEN - PRESIDENT

BY: *Agnes Gladden*
AGNES GLADDEN - SECRETARY-TREASURER

STATE OF KANSAS SS
COUNTY OF FORD

BE IT REMEMBERED THAT ON THIS 12 DAY OF March, 1976, BEFORE ME, A NOTARY PUBLIC IN AND FOR SAID COUNTY AND STATE CAME KENNETH L. GLADDEN AND AGNES GLADDEN, HIS WIFE, TO ME PERSONALLY KNOWN TO BE THE SAME PERSONS WHO EXECUTED THE FORGOING INSTRUMENT OF WRITING AND DULY ACKNOWLEDGED THE EXECUTION OF SAME. IN TESTIMONY WHEREOF, I HAVE HEREUNTO SET MY HAND AND AFFIXED MY NOTARIAL SEAL THE DAY AND YEAR ABOVE WRITTEN.

MY APPOINTMENT EXPIRES 10-15-79

Edith M. Smyres
NOTARY PUBLIC

I, GRANT A. BREZINA, LICENSED PROFESSIONAL ENGINEER AND REGISTERED LAND SURVEYOR IN THE STATE OF KANSAS HEREBY CERTIFY THAT I HAVE ACCURATELY SURVEYED AND PLATTED REPLAT OF BLOCK 4, GLADDEN ADDITION AND THAT BOUNDARY CORNERS AND CONTROL POINTS HAVE BEEN SET AS REQUIRED BY ORDINANCE.

DATE March 11, 1976

BREZINA ENGINEERING
DODGE CITY, KANSAS

BY: *Grant A. Brezina*
GRANT A. BREZINA, P.E. & L.S.

THIS PLAT OF REPLAT OF BLOCK 4, GLADDEN ADDITION HAS BEEN SUBMITTED TO AND APPROVED BY THE FORD COUNTY REGIONAL PLANNING COMMISSION THIS 12th DAY OF April, 1976.

David K. Muckerman
DAVID K. MUCKERMAN - SECRETARY

Laurence Stanton
LAURENCE STANTON - CHAIRMAN

THE DEDICATIONS SHOWN ON THIS PLAT ACCEPTED BY THE BOARD OF CITY COMMISSIONERS OF THE CITY OF DODGE CITY, KANSAS, THIS 3rd DAY OF May, 1976.

ATTEST:

N.A. Cromwell
N.A. CROMWELL
CITY CLERK

Donald R. Barber
DONALD R. BARBER
MAYOR

THE DEDICATIONS SHOWN ON THIS PLAT ACCEPTED BY THE BOARD OF COUNTY COMMISSIONERS OF FORD COUNTY, KANSAS, THIS 19 DAY OF April, 1976.

Fred A. Swart
FRED A. SWART - CHAIRMAN

Vern Birney
VERN BIRNEY - COMMISSIONER

ATTEST:
Lucille Keck
LUCILLE KECK - COUNTY CLERK

Edward O. Gibb
EDWARD O. GIBB - COMMISSIONER

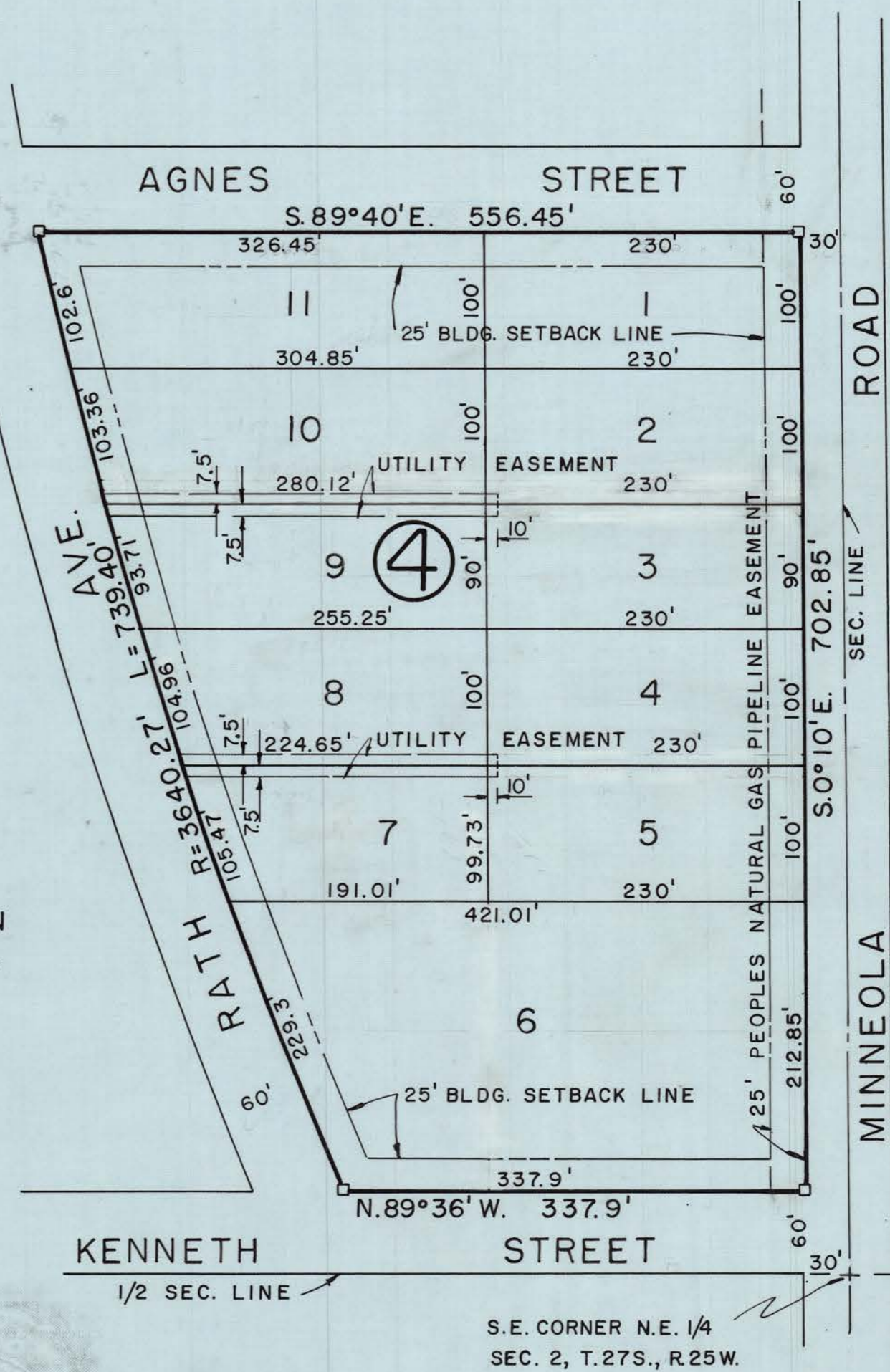
ENTERED ON TRANSFER RECORDS THIS 24 DAY OF May, 1976.

Lucille Keck
LUCILLE KECK - COUNTY CLERK

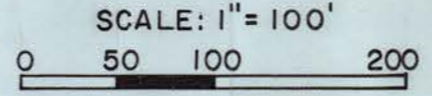
THIS IS TO CERTIFY THAT THIS INSTRUMENT WAS FILED FOR RECORD IN THE REGISTER OF DEEDS OFFICE ON THE 24 DAY OF May, 1976; IN BOOK D, PAGE 68 at 9:00 A.M.

Juanita Dulick
REGISTER OF DEEDS

NOTE: BOUNDARY SURVEY PLAT OF GLADDEN ADDITION FILED IN PLAT BOOK D ON PAGE 8.



LOCATION MAP



□ = 4" x 4" CONCRETE MONUMENT

